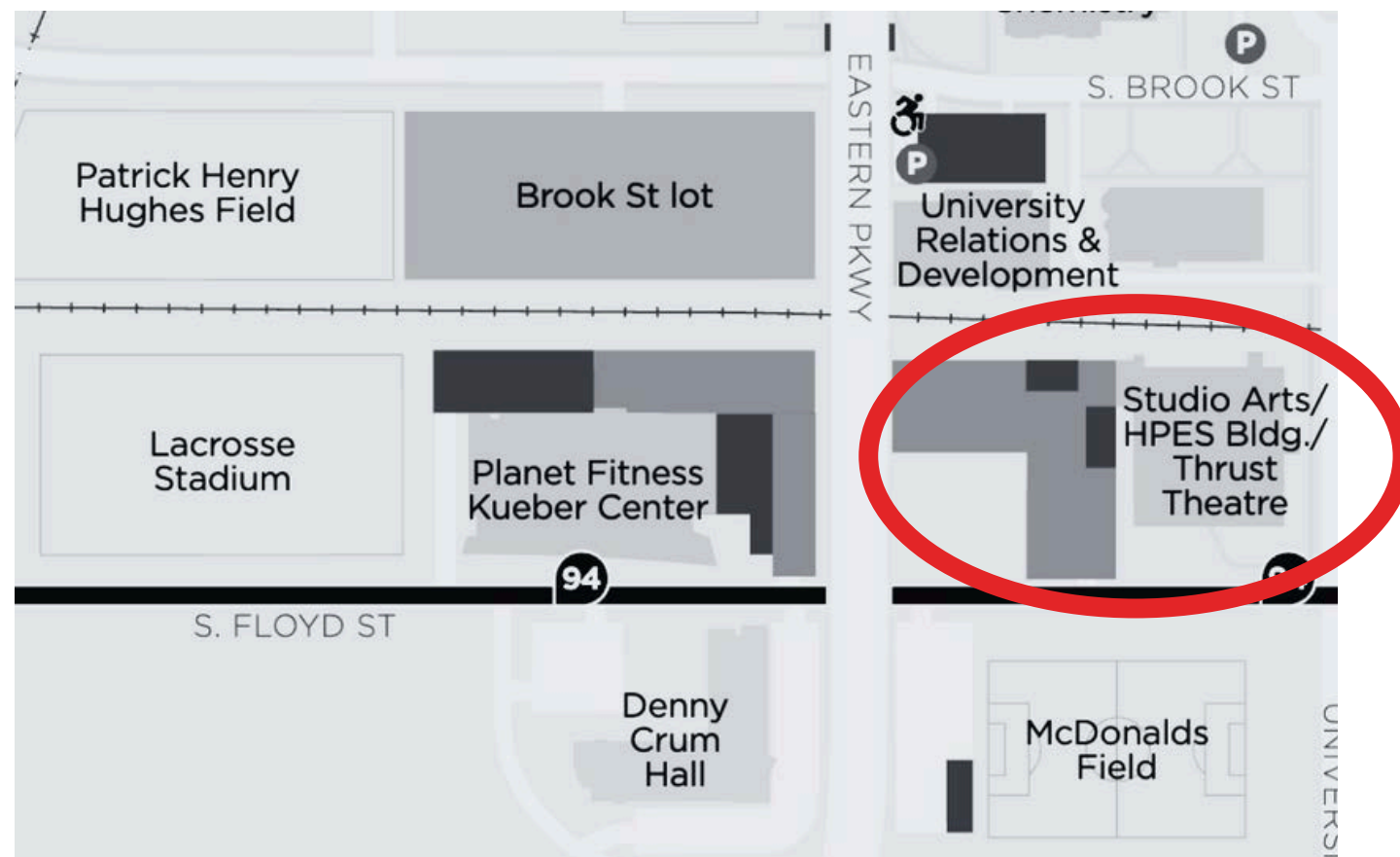


# DAY 1 PARKING AND DIRECTION MAPS

## THRUST THEATRE CULTURAL CENTER PAID LOT FLOYD ST. PARKING GARAGE



### UOFL THRUST THEATRE

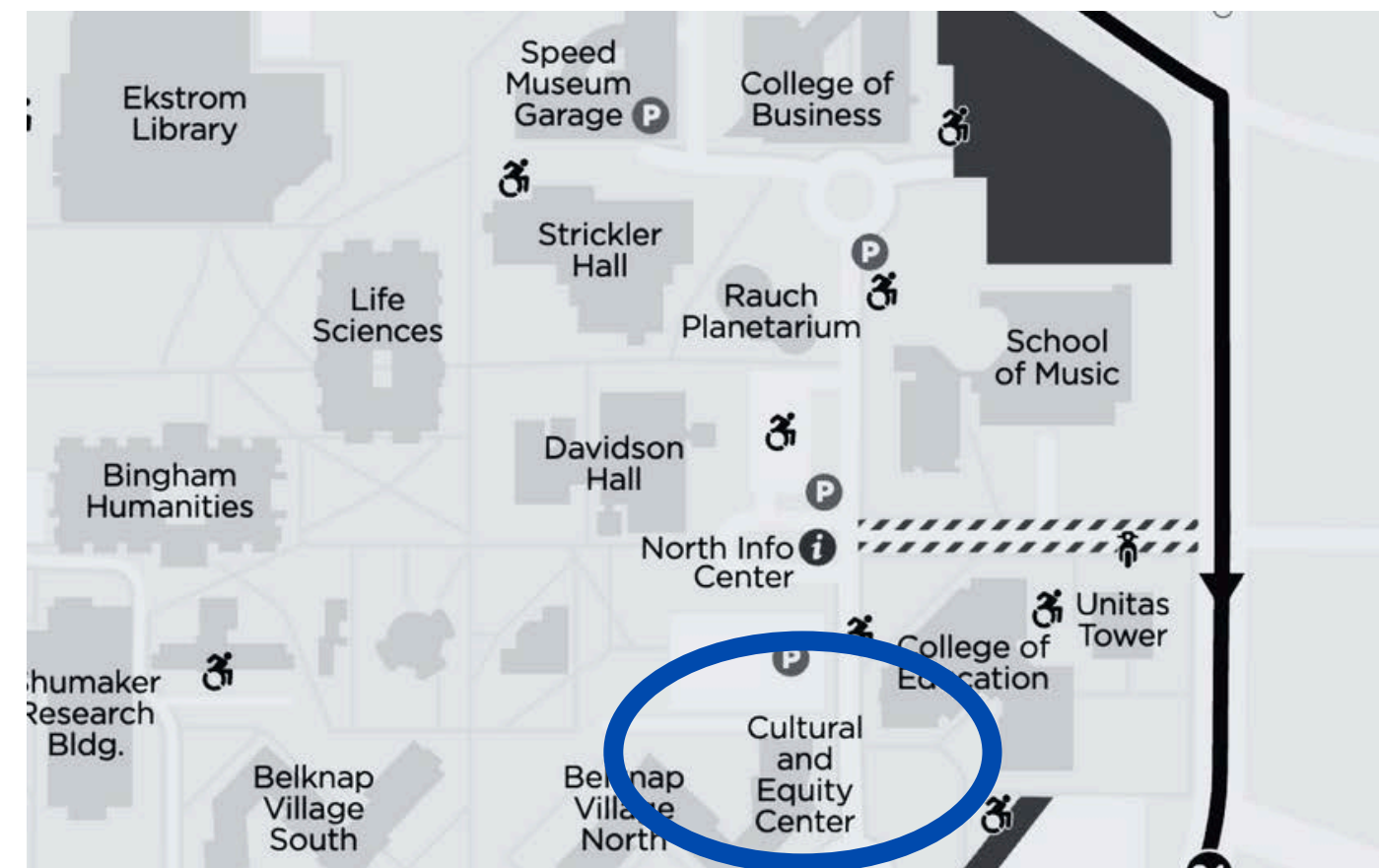
2314 S FLOYD ST, LOUISVILLE, KY 40208

### FLOYD STREET PARKING GARAGE TO THRUST THEATRE WALKING DIRECTIONS

- HEAD SOUTH ON S FLOYD ST FOR .01 MILES
- DESTINATION WILL BE ON THE RIGHT

### THRUST PARKING LOT TO THRUST THEATRE WALKING DIRECTIONS

- PARKING LOT IS LOCATED RIGHT BEHIND THRUST THEATRE BY THE PAPA JOHNS

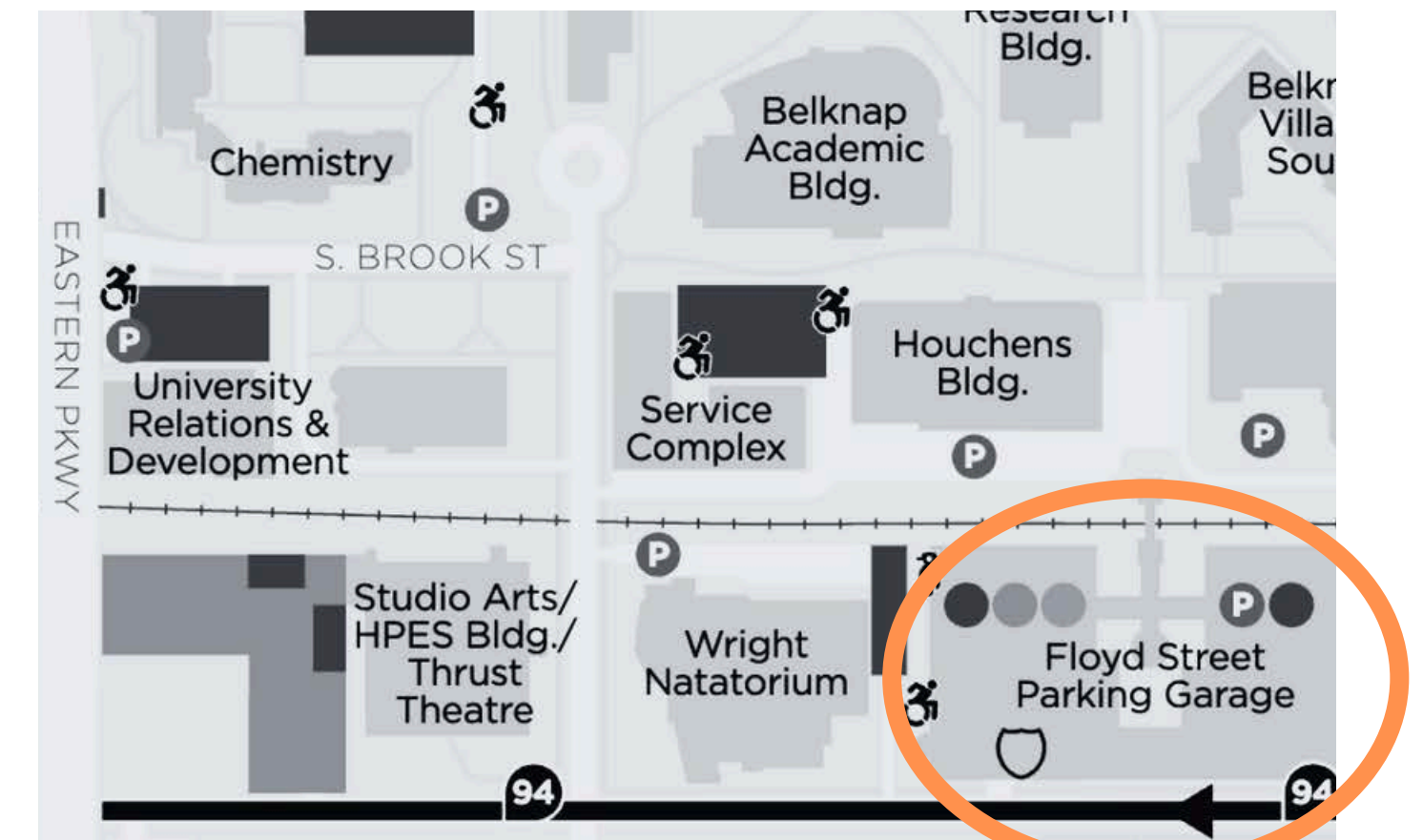


### UOFL CULTURAL AND EQUITY CENTER

120 E BRANDEIS AVE, LOUISVILLE, KY 40208

### CULTURAL CENTER LOT TO DAVIDSON HALL WALKING DIRECTIONS

- HEAD NORTH TOWARD E BRANDEIS AVE FOR 62 FT
- TURN LEFT ONTO E BRANDEIS AVE IN 200 FT
- TURN LEFT ONTO S 1ST ST
- DESTINATION WILL BE ON THE LEFT



### FLOYD STREET PARKING GARAGE

2126 S FLOYD ST, LOUISVILLE, KY 40208

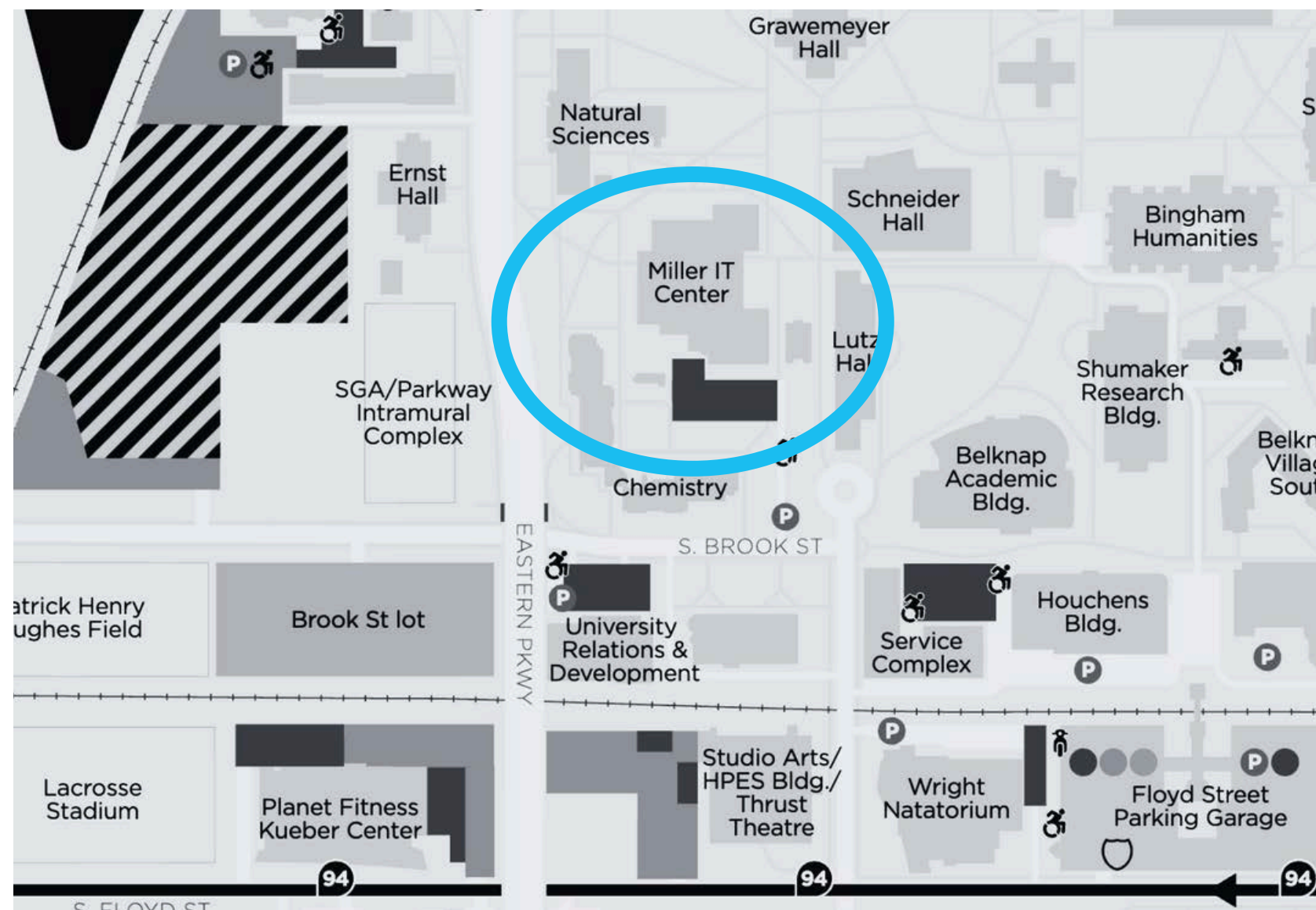
### FLOYD STREET PARKING GARAGE TO DAVIDSON HALL

- DAVIDSON HALL IS LOCATED NEXT TO THE GHEENS PLANETARIUM, NEAR THE COLLEGE OF BUSINESS AND SPEED ART MUSEUM



# DAY 2 PARKING AND DIRECTION MAPS

## MILLER IT CENTER STRICKLER AUDITORIUM

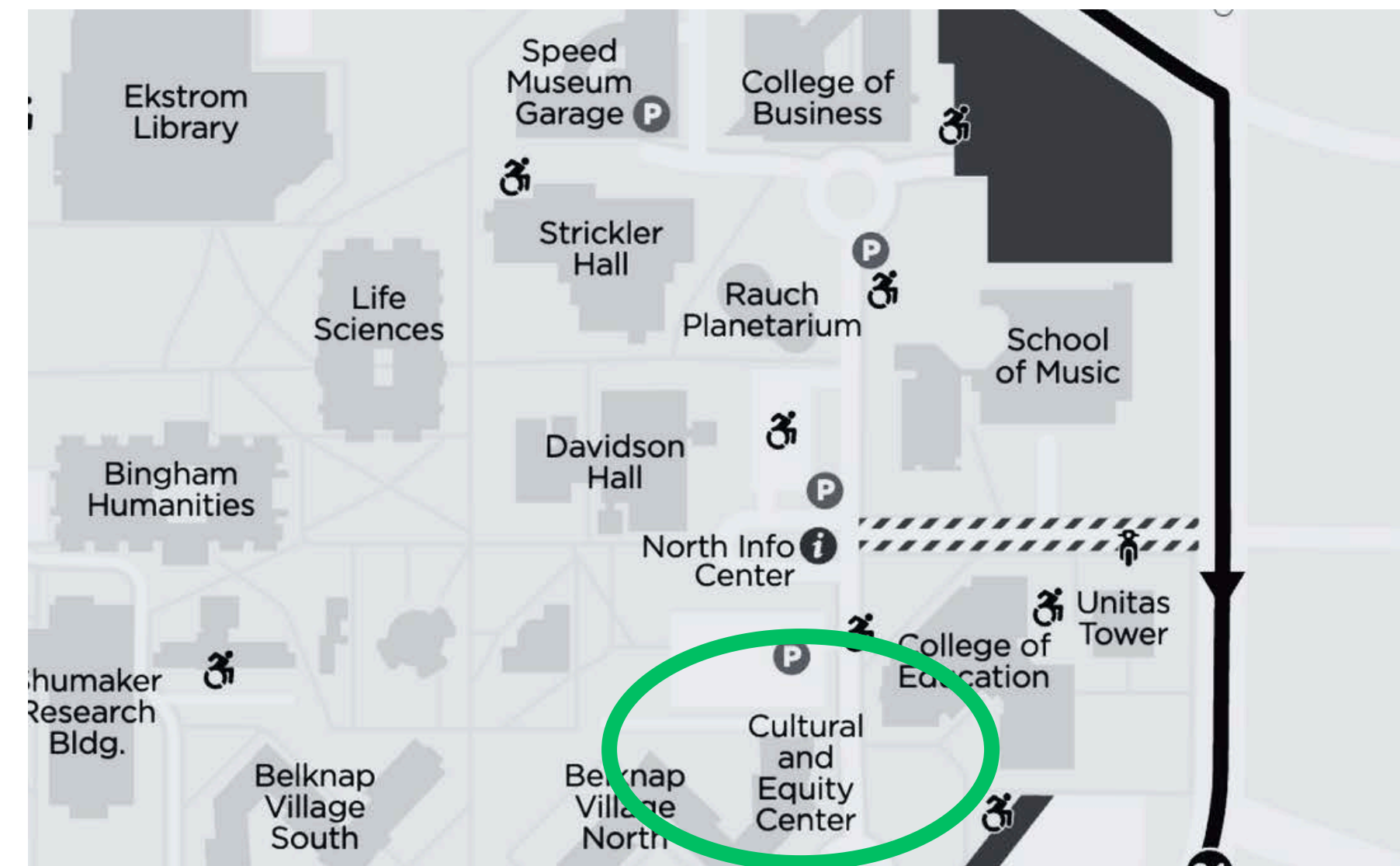


### MILLER IT CENTER

2315 S 1ST ST UNIT 109, LOUISVILLE, KY 40208

### MILLER IT CENTER PARKING LOT

- PARKING LOT IS LOCATED RIGHT BEHIND THE MILLER IT CENTER OFF OF S.BROOK STREET



### UOFL CULTURAL AND EQUITY CENTER

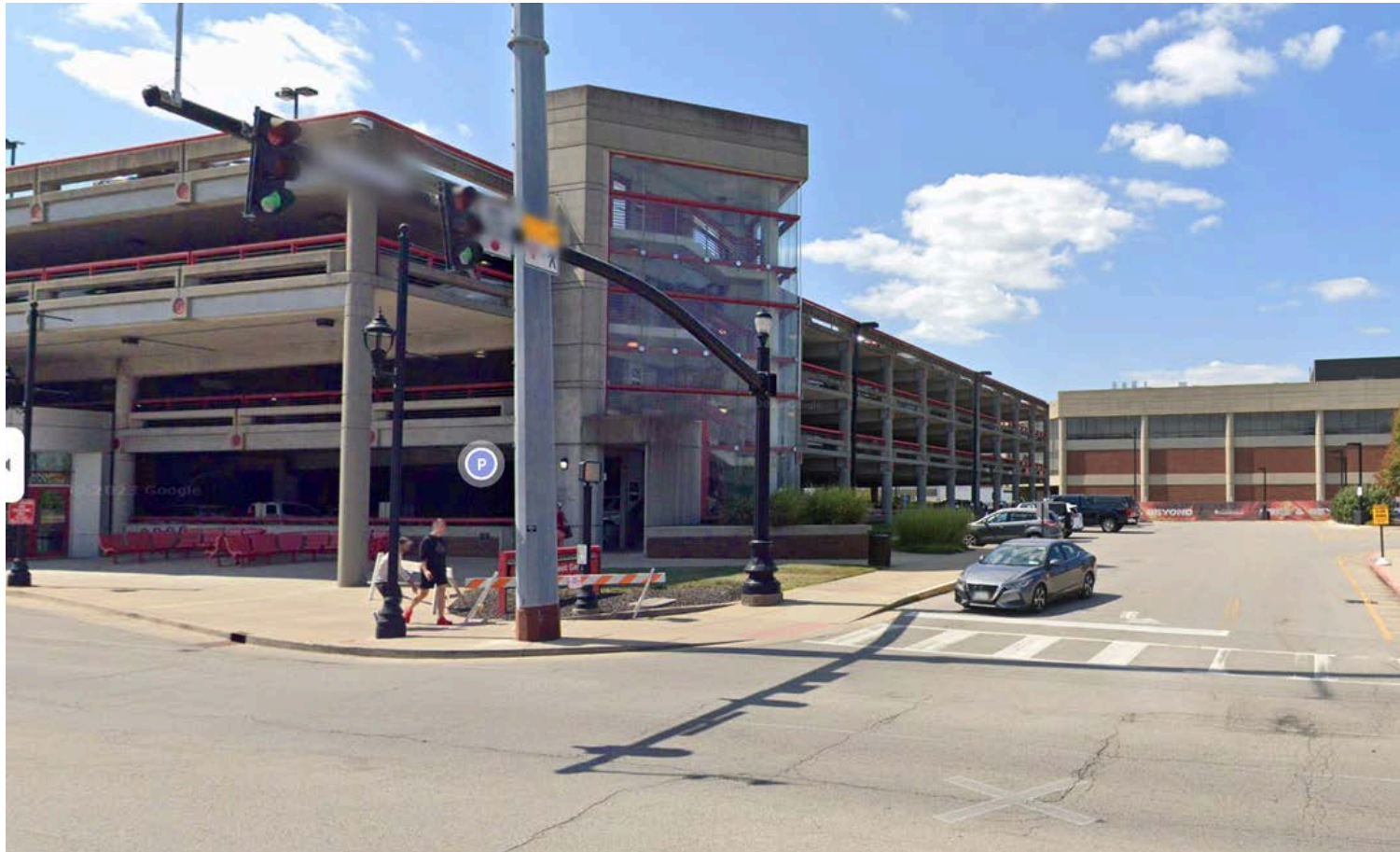
120 E BRANDEIS AVE, LOUISVILLE, KY 40208

### CULTURAL CENTER LOT TO STRICKLER AUDITORIUM WALKING DIRECTIONS

- HEAD SOUTH TOWARD S AVERY COURT WALK FOR 420 FT
- TURN RIGHT ONTO S AVERY COURT WALK
- DESTINATION WILL BE ON THE RIGHT



# BUILDING & PARKING PHOTOS



**FLOYD STREET PARKING GARAGE**



**THRUST THEATRE**



**DAVIDSON HALL**



**CULTURAL CENTER PAID LOT**



**MILLER IT CENTER**



**STRICKLER HALL**